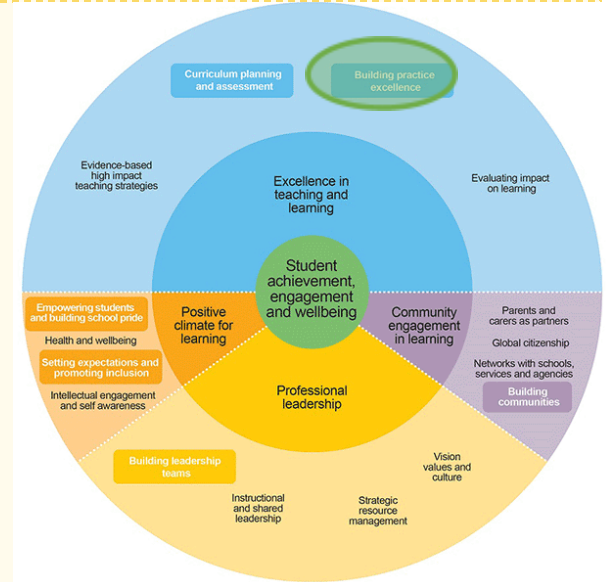
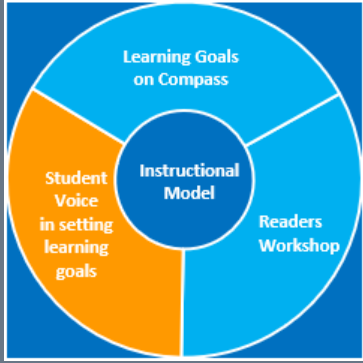


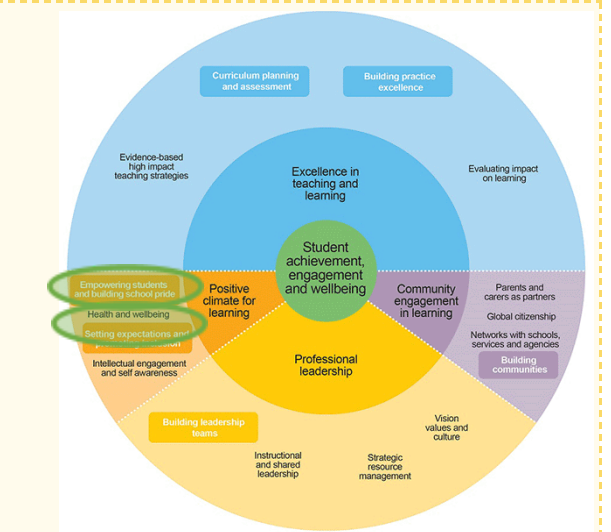


# 2021 AIP

<b>Goal</b>	To maximise learning growth and achievement for all students.
<b>KIS</b> Building practice excellence	<ul style="list-style-type: none"> <li>Embed the use of the school's agreed instructional model across Reading to enable consistent, high quality instruction in every classroom.</li> </ul>
<b>Actions</b>	<ul style="list-style-type: none"> <li>Implement a consistent Readers Workshop Instructional Model across Leopold Primary School.</li> </ul>
<b>Outcomes</b>	<p><b>Students at all year levels will:</b></p> <ul style="list-style-type: none"> <li>Set goals as part of Readers Workshop. Koori students will have input into their learning plans.</li> </ul> <p><b>Education Support Staff will:</b></p> <ul style="list-style-type: none"> <li>Undertake Readers Workshop Training to ensure consistent practice across all classrooms.</li> <li>Support students with their learning goals.</li> </ul> <p><b>Teachers will:</b></p> <ul style="list-style-type: none"> <li>Use the agreed Readers Workshop first 15 days planning document.</li> <li>Undertake the professional learning of the Readers Workshop instructional practice and the classroom practice.</li> <li>Participate in Learning Walks across LPS to evaluate the success of the implementation of the Readers Workshop Model and Instructional Model.</li> <li>Have Readers Workshop as a focus in their Performance and Development Plans for 2021</li> <li>Use student learning goals and data to set targets for the Tutoring Program</li> </ul> <p><b>School Leaders will:</b></p> <ul style="list-style-type: none"> <li>Develop Readers Workshop protocols and exemplars</li> <li>Will set up a structure to facilitate coaching in reading</li> <li>Support staff in the implementation of the Tutoring Program</li> <li>Develop a Learning Walk protocols with staff to get feedback on the implementation of the Readers Instructional Model in all classrooms across Leopold Primary School</li> <li>Provide coaching support for the implementation of the Instructional Model and Readers Workshop Model</li> </ul>



<b>Goal</b>	To improve the social and emotional wellbeing of all students
<b>KIS</b> Empowering students and building school pride. Setting expectations and promoting inclusion.	<ul style="list-style-type: none"> <li>Build the capacity of teachers, students and parents to adopt Social and Emotional Learning strategies across the school and community.</li> <li>Enhance the use of the school's learning management system to monitor and track student health and wellbeing, and achievement.</li> <li>To empower students to be more actively engaged in learning and school.</li> </ul>
<b>Actions</b>	<ul style="list-style-type: none"> <li>All staff to undertake the first two days of the Berry Street Education Model Training.</li> <li>All staff will use Compass to monitor the Social and emotional Wellbeing of all students at Leopold Primary School.</li> </ul>
<b>Outcomes</b>	<p><b>Students will:</b></p> <ul style="list-style-type: none"> <li>Be able to use strategies to self-regulate and build their stamina. Koori students will have strategies included in their personal learning plans</li> <li>Have set social, emotional and wellbeing goals to support their learning.</li> </ul> <p><b>Education Support Staff will:</b></p> <ul style="list-style-type: none"> <li>Undertake the Relationship and Stamina and Engagement section of the training as part of the Berry Street Education Model.</li> <li>Use the strategies learnt from the training in everyday practice.</li> <li>Use the Berry Street Champions to support the implementation of the BSEM strategies.</li> <li>Review and follow the agreed values matrix.</li> </ul> <p><b>Teachers will:</b></p> <ul style="list-style-type: none"> <li>Undertake the Relationship and Stamina and Engagement section of the training as part of the Berry Street Education Model.</li> <li>Use the strategies learnt from the training in everyday practice.</li> <li>Use the Berry Street Champions to support the implementation of the BSEM strategies.</li> <li>Use Compass to enter chronicles relating to student wellbeing.</li> <li>Review and follow the agreed values matrix.</li> </ul> <p><b>School Leaders will:</b></p> <ul style="list-style-type: none"> <li>Provide staff with Professional Learning on the BSEM strategies.</li> <li>Provide staff with professional Learning on the use of Compass to enter Chronicles.</li> <li>Use Compass to enter chronicles relating to student wellbeing and also enter student wellbeing goals to support their learning.</li> <li>Review and follow the agreed values matrix.</li> </ul>



<b>Goal</b>	To maximise learning growth and achievement for all students.
<b>KIS</b> Evaluate impact on learning.	<ul style="list-style-type: none"> <li>Build the capacity of all leaders to support, monitor and evaluate the impact of teaching on student learning outcomes.</li> <li>Enhance consistency and rigor in data literacy and assessment practices.</li> </ul>
<b>Actions</b>	<ul style="list-style-type: none"> <li>Implement a Whole School Professional Learning Community structure.</li> <li>Develop staff capacity to use data to inform differentiated planning and practice according to each student's point of need.</li> </ul>
<b>Outcomes</b>	<p><b>Students will:</b></p> <ul style="list-style-type: none"> <li>Have access to data to assist in setting their learning goals</li> </ul> <p><b>Education Support Staff will:</b></p> <ul style="list-style-type: none"> <li>Support students to achieve the learning goals they have set</li> <li>Support koori students to achieve the learning goals they have set</li> <li>Have a greater understanding of point of need teaching means at Leopold Primary School</li> </ul> <p><b>Teachers will:</b></p> <ul style="list-style-type: none"> <li>Have access to Professional Development on how a PLC operates at Leopold Primary School.</li> <li>Contribute to the high performing PLCs and discuss evidence of impact on student learning outcomes.</li> <li>Monitor the progress of students through the gathering and analysis of student learning data.</li> </ul> <p><b>School Leaders will:</b></p> <ul style="list-style-type: none"> <li>Provide Professional Development for staff Professional Learning Community structures and operations.</li> <li>Develop a meeting schedule that supports PLCs.</li> <li>Provide coaching for PLC Leaders and their teams in reading of data and implementing strategies to Improve student learning outcomes.</li> </ul>

